

MAS Autumn Exhibit 2011... call for artists

Monthaven Art Society

P.O. Box 2441 ... Hendersonville ... TN 37077-2441 ... 615-822-0789

It's our time of year again... the annual fall Exhibit is here. We hope you are ready with new artwork!!

To participate in this exhibit, you must be a paid member by Oct 31st (artwork drop-off date).

You can mail your dues to the address listed above or pay when you drop off your paintings. **MAS membership dues are \$25/yr.** Our membership year essentially runs from Fall Exhibit to Fall Exhibit. We do not prorate dues for a partial year. However, if you join at or after our Oct 9 program, we will consider you paid for 2012.

This is a non-juried Exhibit.

New members are most welcome and encouraged to join MAS & participate.

Important dates

- Drop off artwork** - **Monday, October 31 – 10:00 am to 3:00 pm** – at Monthaven
bring signed **Artist's Release Form**, and your **Artist's Bio**

*Monthaven Mansion (go to www.monthavenartsociety.org for map)
1154 West Main Street
Hendersonville, TN 37075
(615) 822-0789*

If you cannot make the drop-off date/time, contact Kathleen for special arrangements: 826-2789.

- Reception – Friday evening, Nov 4, from 6:00-8:00pm – Monthaven Mansion**

Open to the public; no admission; refreshments; live music. Invite your friends to this fun event!
All exhibiting artists are requested to PLEASE attend Reception in support of the show.

- Exhibit runs from Fri, Nov 4, to Fri, Dec 9.**

Gallery hours are 9:00am-3:00pm Mon-Fri. **Plus 1:00pm-4:00pm Sundays (NEW).**

- Artists pick up unsold artwork at Monthaven – Monday, Dec 12 – 9:00am-3:00pm.**

If this day and/or time will pose a hardship, please contact the HAC Director, Emma Dye, 822-0789 to make other arrangements.

Artwork rules

- Two (2) pieces may be exhibited per artist.**
- Please no artwork that has been shown at Monthaven Mansion previously.**
- All artwork must be WIRED for hanging – no exceptions. Absolutely no saw-tooth hangers.**
- Artwork must be framed or gallery-wrapped canvas.** No staples on sides of canvas. No boards unless covered by frame.
- Artwork must be DRY.**
- Size – no artwork larger than 48 inches in length or in height** including frame.
- Each piece of art must have title block** attached to top left back of two-dimensional work and on the bottom of three-dimensional items. Title block forms are enclosed.
- All artwork must be FOR SALE.**
- All artwork must be ORIGINAL. No giclées will be hung.** Giclées that are matted & shrink-wrapped may be put in the HAC art bin for sale... each must have title block on the back with price.
- MAS/HAC reserve the option to decline acceptance of any artwork we consider inappropriate.**
For ex: nudes or artwork that might be frightening/disturbing to youngsters.

Sold artwork – should be paid for at time of purchase. Must remain on exhibit until show closes.
Hendersonville Arts Council will receive 20% commission on sales, MAS 10% commission, the artist 70%.

continued on next page

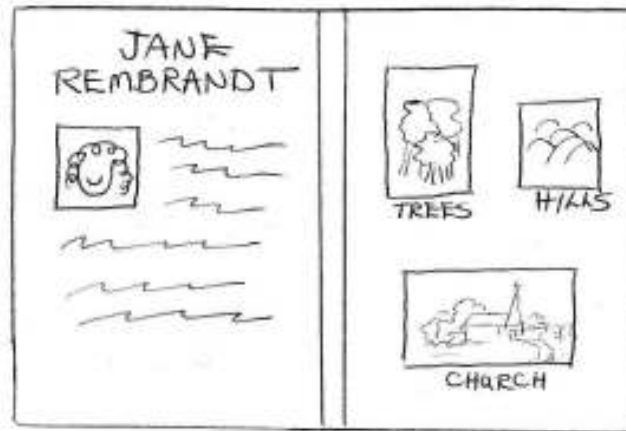
Artists' Bio Book

We will have an Artists' Bio Book at this Exhibit, consisting of two facing pages for each artist:

P1: The left-hand page to contain your **Artist Bio text** and a **photo of yourself**.

P2: The right-hand page to show **several images of your artwork – preferably in color**.

Your **Artist Bio** should give your **contact information** and **if you take commissions**, please say so. The pages you bring will be placed in plastic sheet-covers. You may also slip in a few business cards if you like (no more than 3-4).



P1: bio + photo

P2: artwork images

Assembled alphabetically, these artists' bios make a *nice presentation book* through which guests can browse during their visit to the gallery. We have done this for a number of years and visitors enjoy having the information. It is *also a selling tool for the artists*.

You can create your Bio using word processing software and inserting digital images of your artwork. Or you can type it and attach color photos, which show up better.

Please bring this bio with you when you drop off your artwork so we will have time to compile the book before the Opening Reception. If you do not bring it with you, you will not be in the book. Feel free to opt out of the Bio Book if you like.

If you need more invitations 1.) go by Monthaven Mansion (open M-F 9am-3pm)
1154 West Main Street, Hendersonville 615-822-0789

2.) or contact me and I will mail them to you –

H 615-860-0918 C 615-860-2368

christy@portraitcreations.com

Here's to another of our terrific exhibits!

Christy Pilkinton
President,
Monthaven Art Society

continued on next page

2011 ARTIST'S RELEASE FORM – please print everything except signature

The Hendersonville Arts Council accepts artwork for display by artists with the assurance that the HAC, its staff, and volunteer workers will exercise all due care to protect property. However, neither the Hendersonville Arts Council nor Monthaven Art Society is liable for loss or damage to any piece of art while in the possession of HAC.

Please complete and sign below to indicate that you will hold harmless the Hendersonville Arts Council, its staff, the City of Hendersonville, the Monthaven Art Society, and any volunteers for damage or loss. Your signature below indicates that you have read and agree to all of the above stipulations.

Name (please print) _____

Signature _____

Phone - home _____ work _____

cell _____

E-mail (please print) _____

Address _____

City, State, Zip _____

NEWSLETTER – how would you prefer to receive? e-mail snail-mail

OPPORTUNITIES TO PARTICIPATE - MAS now has over 100 members. So, as you can imagine, we need as many helping hands as possible. If you are interested in participating in our exciting growth, please consider carefully & check where you might contribute your talents & your heart.

help with exhibits communicate with members organize events planning

community outreach fund-raising projects promotion/publicity social media

hospitality help w newsletter website backup physical stuff (set up/moving things)

other _____ (please specify)

Do you have physical limitations we should be aware of? _____

LIST OF ARTWORK TO BE EXHIBITED (please print)

Title

Medium

Price

1.) _____

2.) _____

continued on next page

please print

please print

Artist:

Title:

Medium:

Retail Price:

Artist:

Title:

Medium:

Retail Price:

please print

please print

Artist:

Title:

Medium:

Retail Price:

Artist:

Title:

Medium:

Retail Price:

the end